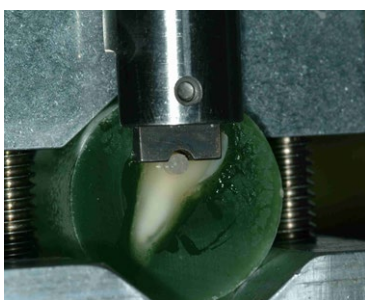
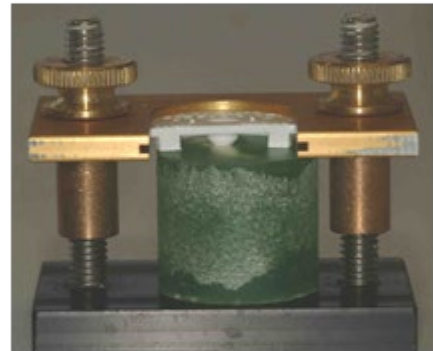
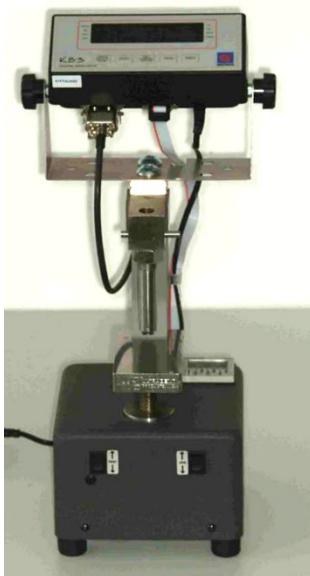
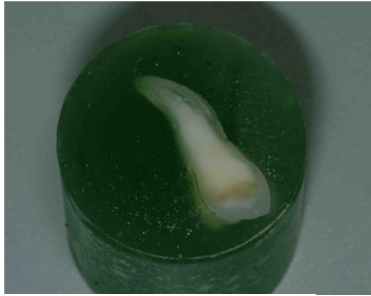


**„Improving the application of adhesive systems
and light-curing of composite resins“
Hands-on course for optimizing your techniques**

Dr. Uwe Blunck

In this course you can prove your application technique of your usually used adhesive system or other out of a selection of the most commonly available products by testing the bond strength with a mobile testing device:



Your questions regarding adhesive techniques can be discussed and answered in order to improve your clinical results even more.

One of the most important handling steps for a long lasting composite resin restoration is an appropriate and effective light-curing.

This also can be exercised at a phantom head which measures the light intensity of your own LCU with your handling for curing composite resin at the bottom of a 4 mm deep occlusal cavity of a molar.

This also helps you to avoid mistakes during light curing!



Lectures:

- Bonding mechanisms to tooth substrate
 - Challenging aspects in effective bonding
- Adhesive systems
 - Overview
 - Assessment
 - Comparison Etch&Rinse-technique systems vs self-etching systems
 - Compatibility adhesive / composite resin
- Application of adhesive systems
 - Recommendations for effective bonding
 - Management of deep dentin cavities
 - Management of cavities for indirect restorations
 - Application of adhesives in special situations
 - Post insertion
 - Repair of restorations
- Light-curing
 - Basics in light-curing composite resins
 - How to avoid typical mistakes during light-curing